

LEGEND

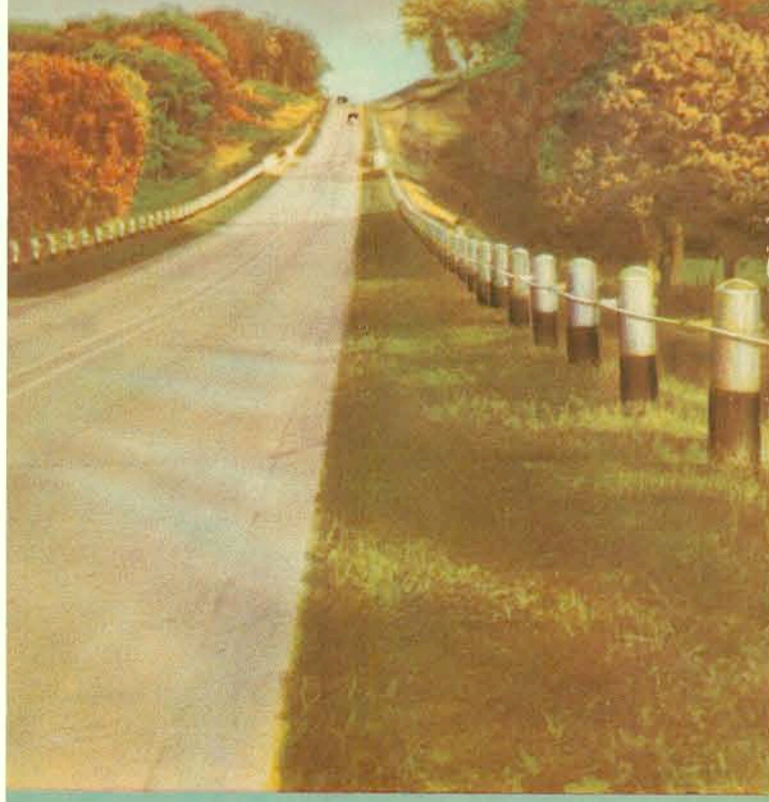
- U.S. AND PRIMARY ROADS**
- Paved ————— 4,546
 - Bituminous Surface ——— 4,70
 - Graveled ————— 3,130
 - Earth ————— 172
 - Under Construction ———
- Mileage on Primary Roads thus:
 U.S. Highway ——— 6 ——— State Highway ——— 12
- COUNTY TRUNK ROADS**
- Surface ———
 - Earth ———
- CITIES AND TOWNS**
- Height and weight of letters indicate population
- Des Moines** (100,000 or over)
Davenport (50,000 to 100,000)
Council Bluffs (10,000 to 50,000)
- County Seats
 Cedar Falls (4,000 to 10,000)
 Maquoketa (1,000 to 5,000)
 Cambridge (0 to 1,000)
- GENERAL**
- State Parks
 - Point of Interest
 - River or Stream
 - Lake
 - Ferry

CORRECTED TO JAN. 1, 1938

IOWA

HIGHWAY MAP

1937



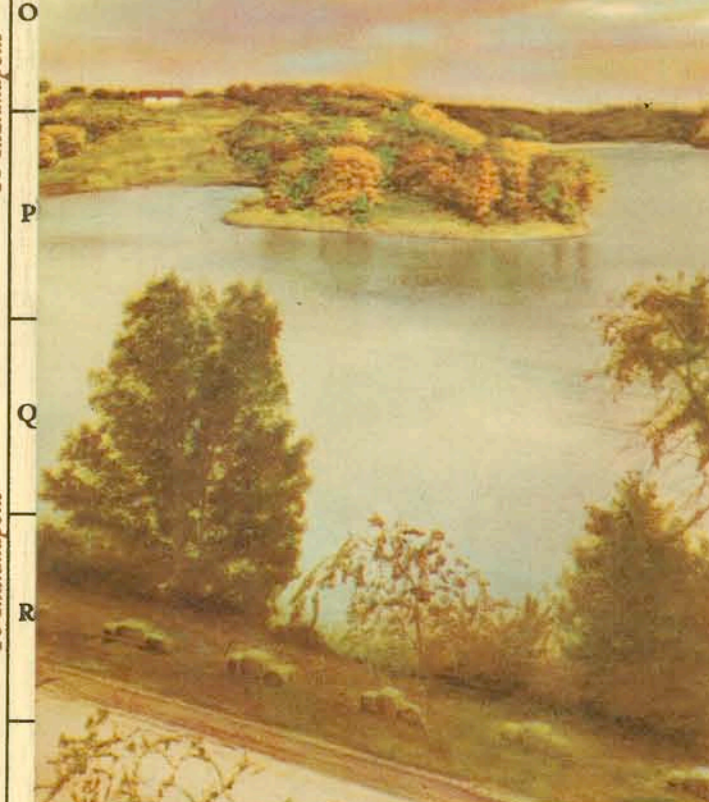
FOR FREE DISTRIBUTION
 IOWA STATE HIGHWAY COMMISSION
 AMES, IOWA

CORRECTED TO JAN. 1, 1938

IOWA

HIGHWAY MAP

1937



FOR FREE DISTRIBUTION
 IOWA STATE CONSERVATION COMMISSION
 DES MOINES, IOWA